



www.fiat.co.za

DISCLAIMER: Fiat products are distributed by Fiat Group Automobiles South Africa. Pictures are for illustrative purposes only and are not necessarily accurate. Fiat Group Automobiles South Africa reserves the right to change specifications and discontinue models and equipment without notice.
FOR MORE INFORMATION CONTACT YOUR NEAREST FIAT DEALER. E & OE.

Part Number 59032924

LINEA



BEAUTY NEEDS NO EXPLANATION.

SMOOTH FLOWING SHAPES. UNMISTAKABLE ITALIAN DESIGN. PREMIUM, DURABLE MATERIALS. BEST -IN-CLASS TECHNOLOGY.
FLAWLESSLY CRAFTED INTO THE NEW FIAT LINEA.







THE WORLD, FROM YOUR PERSPECTIVE.

COMFORT EXTENDS FAR BEYOND DRIVING PLEASURE. EVEN THE INTERIOR OF THE FIAT LINEA HAS BEEN DESIGNED TO MEET THE MOST EXACTING ERGONOMIC STANDARDS. AS AN ULTRA SPACIOUS SEDAN, THE FIAT LINEA ENABLES YOU TO SIT BACK, STRETCH YOUR LEGS AND UNWIND. TO FURTHER ENHANCE YOUR DRIVE, THE STEERING WHEEL CAN BE ADJUSTED TO YOUR LIKING, AND CABIN LAMPS HAVE BEEN CONVENIENTLY FITTED WITH A SWITCH-OFF TIMER. EVEN THE PASSENGERS IN THE BACK ARE ABLE TO INDULGE IN THE FINER DETAILS OF THE FIAT LINEA, SUCH AS ITS UNIQUE REAR AIR-CONDITIONING VENTS AT BOTH FOOT AND KNEE LEVEL TO KEEP THEM COOL, TO ITS REAR ARMREST, WHICH COMES SUITABLY EQUIPPED WITH A GLOVE BOX AND CUP HOLDER. AND ALL LUGGAGE NEATLY FITS IN A MASSIVE CLASS-LEADING 500 LITRE BOOT.



TECHNOLOGY WITHIN VOICE REACH.

THE FIAT LINEA IS GRACEFULLY STYLED TO HOST A RANGE OF FEATURES. THE BLUE&ME™ TECHNOLOGY, JOINTLY DEVELOPED WITH MICROSOFT, ENABLES YOU TO MAKE AND RECEIVE CALLS VIA THE CAR AUDIO SYSTEM. IT CAN ALSO READ OUT YOUR TEXT MESSAGE AND CHANGE MUSIC TRACKS AT YOUR VOICE COMMAND.

EVEN MORE EXCITING IS THE ABILITY TO CONTROL YOUR DIGITAL MP3, WMA AND WAV MUSIC AND AUDIO FILES STORED ON YOUR USB DEVICE. YOU CAN SELECT CATEGORIES, SCROLL THROUGH YOUR SONG LIST AND PLAY USING VOICE OR STEERING WHEEL CONTROL. OF COURSE, COMPLETE CONTROL, WITHOUT DISTRACTION, MEANS YOU CAN CONCENTRATE ON YOUR DRIVING.

THE FIAT LINEA'S INTELLIGENCE IS FURTHER ENHANCED WITH THE MANY SMART AND PERSONALISED "MY CAR" SOLUTIONS, INCLUDING A DIGITAL ODOMETER AND DISTANCE-TO-EMPTY INDICATOR, A UNIQUE DIGITAL, REAL-TIME MILEAGE INDICATOR THAT KEEPS A CHECK ON YOUR FUEL CONSUMPTION AND AN EFFICIENT SERVICE SCHEDULE REMINDER THAT PROMPTS YOU TO BOOK YOUR NEXT SERVICE.

COME TAKE A CLOSER LOOK. YOU WILL BE LEFT IN AWE.



*Full functionality only with compatible handsets.

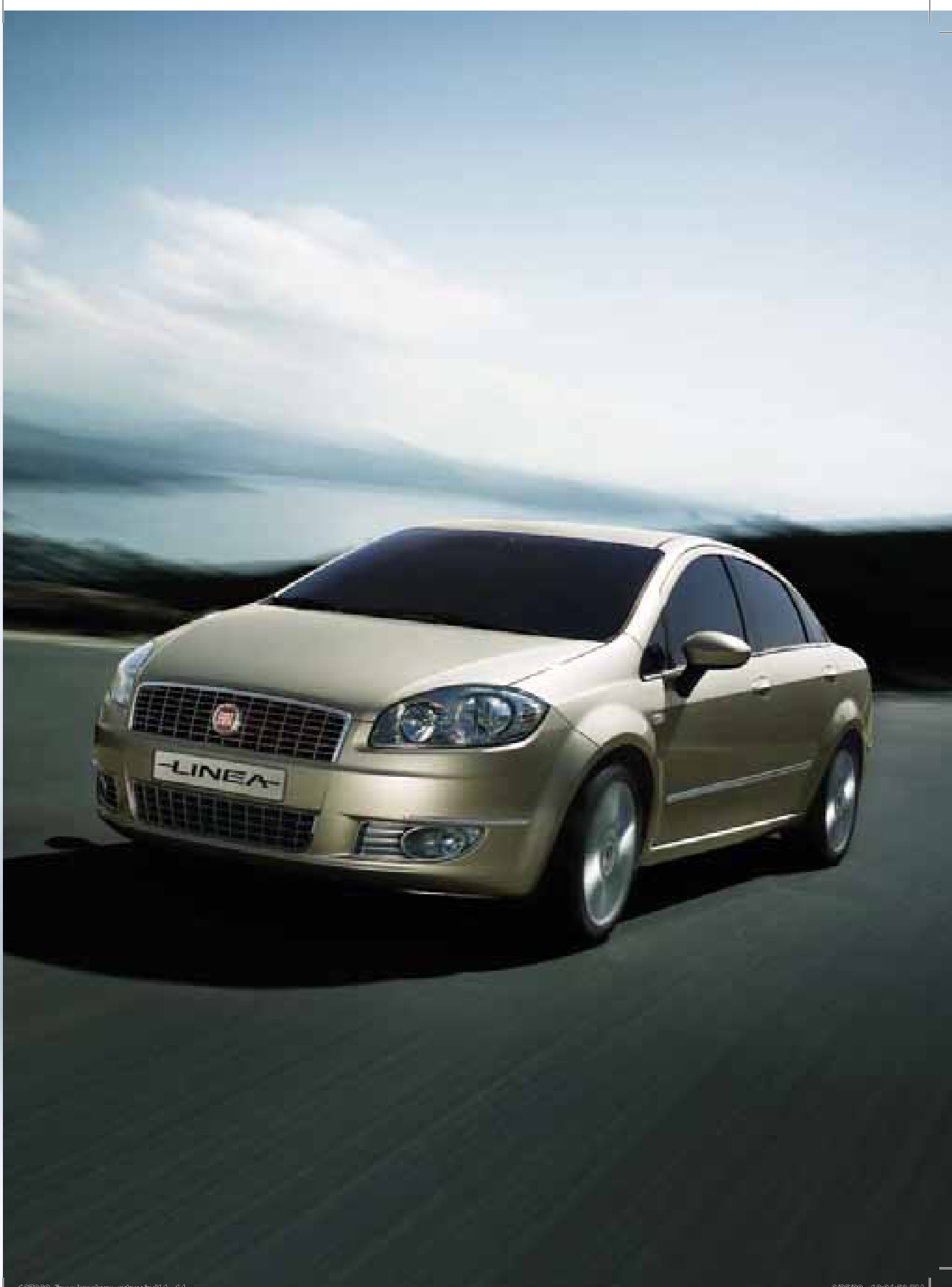






TRUE POWER NEVER SHOUTS.

QUIET, FLEXIBLE, AGILE. THESE THREE WORDS EXEMPLIFY THE ENGINE OF THE FIAT LINEA THAT IS ALWAYS READY TO RESPOND TO THE DRIVER, WHATEVER THE CONDITIONS. THE 1.4 PETROL ENGINE GUARANTEES A SMOOTH, EXTREMELY ENJOYABLE AND LOW FUEL CONSUMPTION DRIVE.

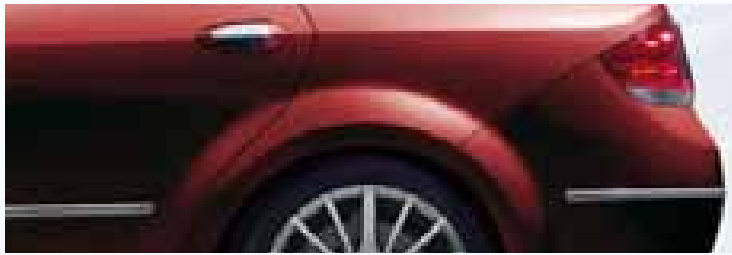


SAFETY YOU WILL NEVER HAVE TO GIVE A SECOND THOUGHT TO.

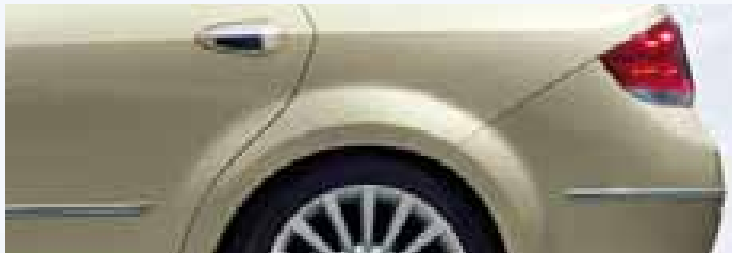
PROTECTION IS A WONDERFULLY OVERWHELMING SENSATION. ONE THAT YOU WILL EXPERIENCE THE SECOND YOU SLIDE BEHIND THE WHEEL OF THE FIAT LINEA. ITS DUAL FRONT AIRBAGS SAFELY COCOON YOU, WHILE ITS ABS WITH EBD ENSURES THAT THE CAR NEVER SKIDS OUT OF CONTROL. FOR YOUR SAFETY, IN THE EVENT OF AN IMPACT, THE FIRE PREVENTION SYSTEM AUTOMATICALLY CUTS OFF THE FUEL FLOW. COUPLED WITH THREE REAR SAFETY HEADRESTS, AN ANTI-THEFT ENGINE IMMOBILISER WITH ROLLING CODE, A PROGRAMMABLE SPEED LIMIT ALARM THAT CURBS OVER-SPEEDING, PROGRAMMABLE FOLLOW-ME-HOME HEADLIGHTS THAT LET YOU STEP OUT OF THE CAR INTO BRIGHT LIGHT, AND A DIGITAL DOOR OPEN INDICATOR, THE FIAT LINEA OFFERS ALL THE EXTRA SECURITY YOU NEED FOR YOU AND YOUR FAMILY.



ATTRACTIVE SHADES



Flamenco Red*



Perla Champagne*



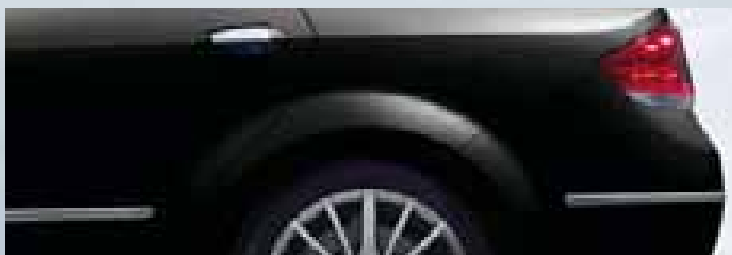
Fox Trot Azure*



Bosa Nova White



Minimal Grey*



Hip Hop Black*



Medium Grey*

* Metallic



Standard Cloth Trim



Leather Trim optional extra (Black or Beige)

TECHNICAL SPECIFICATIONS.

ENGINE	1.4 Emotion
No. of cylinders, arrangement	4, in line, transversely mounted at front
Bore x Stroke (mm)	72.0 x 84.0
Displacement (cc)	1368
Compression ratio	10:8:1
Max power output: kW-EC at rpm	66/6000
Peak torque: Nm-EC at rpm	110/4500
Timing system (control)	1 OHC Tooth timing belt
Fuel feed	timed, sequential electronic MPI, returnless system
Ignition	static with digital electronic control
TRANSMISSION	
Drive	front
Clutch control	hydraulic
Gearbox, no. of speeds	5 + reverse
STEERING SYSTEM	
Rack type	hydraulic power
Steering diameter (m)	11.1
BRAKES	with ABS
Front: Ø mm	Disc 257 (self-ventilating)
Rear: Ø mm	Drum 228
SUSPENSION SYSTEM	
Front	independent wheel McPherson set-up, telescopic double-acting shock absorber, stabiliser bar with ball joint rods
Rear	interconnected wheels on torsion beam, telescopic shock absorbers, stabiliser bar
DIMENSIONS	
Wheelbase (mm)	2603
Front / rear track (mm)	1471 / 1483
Length / width / height ready for the road (mm)	4560 / 1730 / 1487
Luggage space VDA (dm ³)	500
Luggage space with rear seat double folded VDA (dm ³)	870
WHEELS	
Alloy wheels	15" alloy 195/60 R15
ELECTRICAL SYSTEM (12V)	
Battery capacity (Ah)	40 - 50 with climate control
WEIGHTS - TANK CAPACITY	
Kerb weight DIN (kg)	1240
Towable weight: braked / not braked (kg)	500 / 1200
Fuel tank capacity (litres)	45
PERFORMANCE - FUEL CONSUMPTION	
Top speed (km/h)	165
Fuel consumption (1999/100 EC directive)	
urban cycle (l/100 km)	10.1
extra-urban cycle (l/100 km)	6.6
mixed cycle (l/100 km)	7.8
CO ₂ emissions (g/km)	186

MAIN STANDARD EQUIPMENT AND OPTIONS

STYLING	Emotion
Colour coded bumper	■
Electric wing mirrors in body colour with demist function and external temperature sensor	■
Chrome shadow front (top and bottom of radiator grille, fog light frame)	■
Chrome mouldings on bumper, handles (moving part) and side mouldings	■
Metallic paint 210	○
Leather upholstery	○
COMFORT / FUNCTIONALITY	
Electric windows - Front and Rear	■
Adjustable headlamps	■
Leather steering wheel and gear knob 320	■
Electric door locking	■
Power steering	■
Height and axial adjustable steering wheel	■
Trip computer	■
Smoker's kit: ashtray and cigarette lighter in central unit	■
Full rear seat folding	■
Front seat back pockets	■
Driver's seat adjustable for height	■
Rear sun blinds	■
Front armrest with oddment compartment and air vent for rear seats	■
Rear armrest with two compartments, 2 cup-holders and ashtray	■
Automatic climate control system with electric recirculation controls and heated rear window	■
Eyeglass holder	■
Door and luggage compartment opening/closing remote control	■
Electric rear windows with window lock for child safety	■
Electrochromic interior rear-view mirror	
Full size spare wheel	■

SAFETY	Emotion
Driver's airbag	■
Passenger airbag	■
3 rear head restraints	■
ABS with EBD	■
Fog lights (with chrome shadow frame)	■
Immobiliser with rolling code	■
Seat belt reminder	■
Third stop light	■
Follow-me-home lights	■
WHEELS	
15" Alloy wheels with 195/60 R15 tyres	■
AUDIO / TELEMATICS	
Radio with CD + MP3 player, 4 speakers + 2 tweeters	■
Blue&Me™: with Media Player (USB) port, hands-free with 8-button steering-wheel controls, allowing driver to use his/her Bluetooth® mobile phone	■
SERVICE AND WARRANTY	
5-Year anti-corrosion warranty	■
20 000km service interval	■
60 000km/3-Year service plan	■
100 000km/3-Year warranty	■
Roadside assistance (1 Year)	■

■ = Standard ○ = Optional